



# Build <Map-Centric>

## Enterprise Applications

Visualize data to transform your business

**Any Industry. Any Asset Type. Any Application.**



### Mapping

Visualize location information on high quality map styles, including satellite imagery



### Routing

Interactively plan and modify trips using worldwide, street-level map data, including commercial vehicle restrictions



### Directions

Generate turn by turn driving directions and total miles for single or multi stop trip planning with various vehicle configurations



### Geocoding

Input or retrieve latitude/longitude coordinates for precise locations and routing



#### Implementation Support

ALK Maps development teams can help with integration or support to get your application up and running quickly.



#### JavaScript Platform

REST and SOAP APIs available through TPaaS



#### Worldwide Map Coverage

Including Africa, Asia, Europe, Middle East, North America, Oceania, and South America



#### Flexible Licensing Models

Competitive Pricing Available



#### Automobile Routing

Heavy, Medium and Light Duty, Vehicles

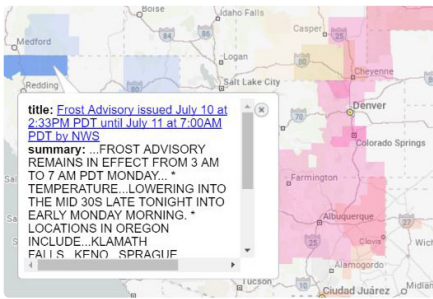


#### Commercial Vehicle Routing

Restrictions Available

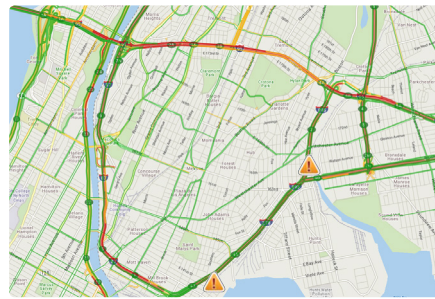
# Beyond the Basics

We've got a rich suite of APIs for building specific business applications. Here's just a few:



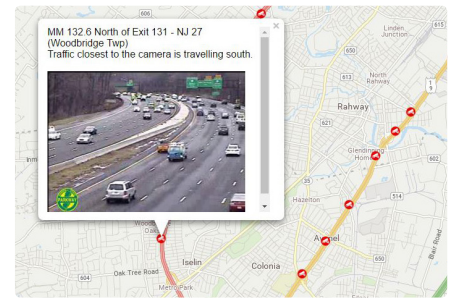
## Weather Overlays & Alerts

Visualize live weather data, view potential impacts to route plans, and send alerts to managers for improved decision making



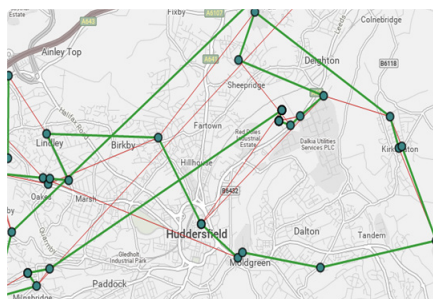
## Traffic & Incident Reporting

View real-time and historic traffic conditions, as well as existing traffic incidents, for accurate ETA calculations



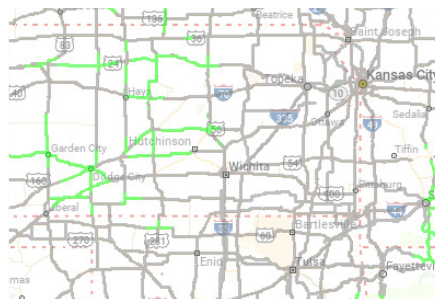
## Traffic Camera Views

Gain deeper insight into traffic, accidents and other conditions by viewing regularly updated live images of the roads



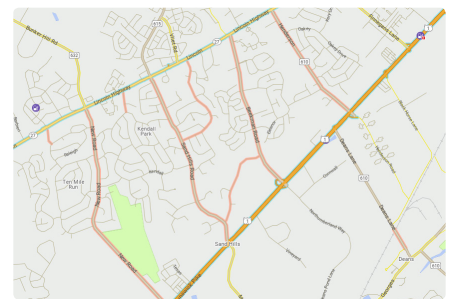
## Advanced Route Optimization

Incorporate stop time windows into a route plan for appropriate trip sequencing, increased drive productivity and asset utilization



## Road Conditions

Display current and predictive road conditions to gauge potential impacts on the route plan. Road conditions are designated as dry, wet/slippery, water/snow and ice/snow



## Commercial Vehicle Routing

Utilize industry standard PC\*MILER truck routing restrictions based on vehicle height, weight, and load to keep assets safe

**COPILOT**<sup>®</sup>  
PROFESSIONAL

## Enhance ALK Maps with Consistent In-Vehicle Routing and Navigation

Get consistent mapping, routes, and results by using ALK's single source of map data in the back office and on the drivers' device.



Get a demo or access our JavaScript Guide & API Documentation at [alkmaps@alk.com](mailto:alkmaps@alk.com)



ROUTING → MILEAGE → MAPPING → NAVIGATION